



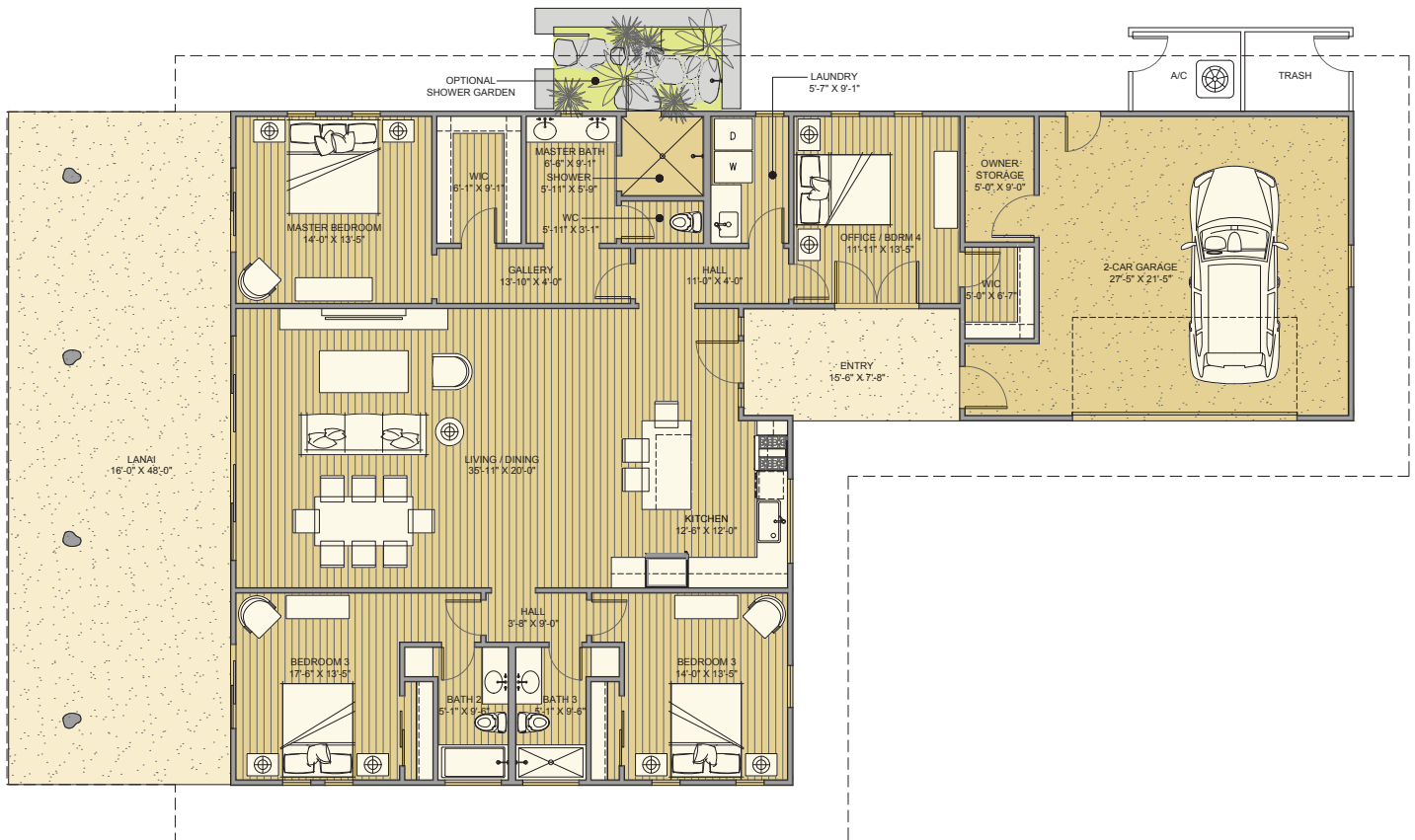
# AINAMALU



## KAULANA

4 beds • 3 baths • 2,104 sq ft

Living Area	2,104
Lanai	760
Entry	124
Garage/Storage	573
Total Sq. Ft.	3,561



JPL Hawaii, LLC reserves the right to modify or change community plans, amenities, floorplans, landscaping, materials, colors or features without prior notice or obligation. Optional and upgraded features may be included at additional cost. Some features or decorative items shown in photos, renderings or model homes may not be available for purchase. All square footages are approximate based on construction drawings and do not necessarily reflect the as-built square footage. All renderings, floorplans, maps and other informational documents are artist conceptions which may not represent actual final construction or be to scale. Product availability and pricing is subject to change without notice.

*Premier Island*  
PROPERTIES  
RB-22237

888-444-3946  
info@ainamalu.com  
www.ainamalu.com