



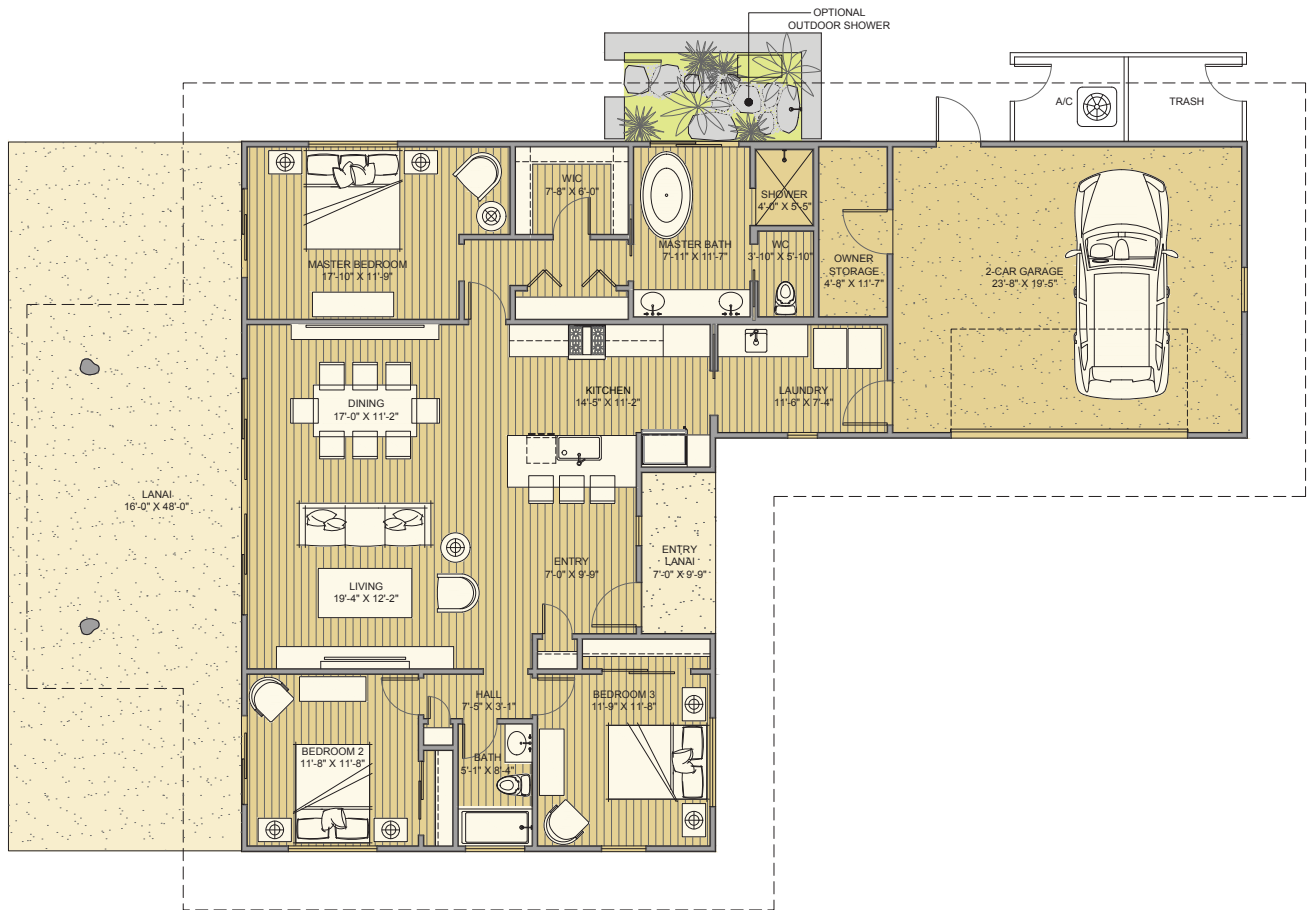
AINAMALU



KALANI

3 beds • 2 baths • 1,661 sq ft

Main Living Area	1,661
Lanai	760
Entry	55
Garage/Storage	518
Total Sq. Ft.	2,994



JPL Hawaii, LLC reserves the right to modify or change community plans, amenities, floorplans, landscaping, materials, colors or features without prior notice or obligation. Optional and upgraded features may be included at additional cost. Some features or decorative items shown in photos, renderings or model homes may not be available for purchase. All square footages are approximate based on construction drawings and do not necessarily reflect the as-built square footage. All renderings, floorplans, maps and other informational documents are artist conceptions which may not represent actual final construction or be to scale. Product availability and pricing is subject to change without notice.

Premier Island
PROPERTIES
RB-22237

888-444-3946
info@ainamalu.com
www.ainamalu.com